

## Introduction to Lumia X1

The Lumia X1 is a Hi-Speed SLA system that encompasses patented Hybrid PhotoSynthesis (HPS) and TruLayer Technology.

HPS technology uses multiple energy sources to simultaneously image both expansive flat areas and intricate details. Meanwhile, TruLayer Technology facilitates rapid detachment of the active print layer, seamlessly transitioning to the next layer.

With the Lumia X1, traditional tradeoffs among accuracy, surface finish, throughput, and print reliability are now obsolete and accomplished within a single print. Standard waiting periods between layers are eradicated, freeing the process from limitations on the size and bulk of printed cross-sections. Achieving diverse geometries is now possible with 2X-8X higher throughput compared to current technologies.



**Forward AM****Ultracur3D® RG 3280**

This material is a ceramic-filled composite material offering an extremely high stiffness around 10 GPa and an HDT above 280°C. This material finds applications in tooling, molding, and wind tunnel testing. Despite the high particle loading, the viscosity is kept low and the settling of particles is limited, making this resin very easy to handle and print. It meets biocompatibility standards for cytotoxicity.

**Features**

- Superior stiffness
- Superior temperature performance
- Very fast and easy to print
- High suspension stability
- Ceramic-like color and feel
- Biocompatible capable per ISO10993-5

**Applications**

- Tooling
- Molding
- Wind Tunnel Testing

**Solid Part Density**

1.73 g/cc

**Ultimate Tensile Strength**

87 MPa

**Elongation at Break**

1.3 %

**Shore Hardness**

96 D

**Tensile Modulus**

10600 MPa

**HDT, 1.82 MPa**

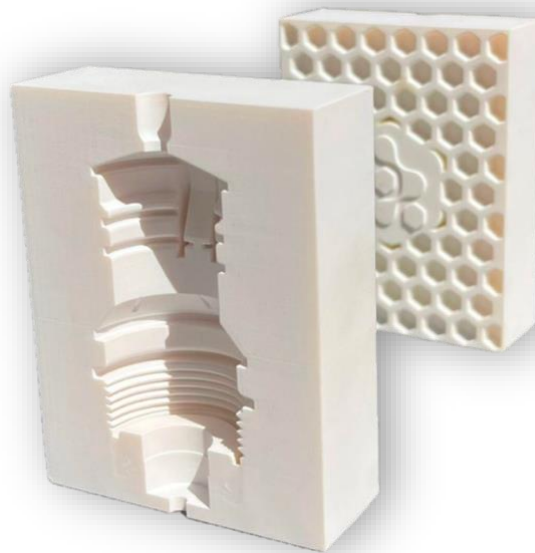
132°C

**HDT, 0.455 MPa**

284°C

**Flammability**

UL94 HB



Technical Data Sheet

Safety Data Sheet

